

# AUTUMN VACATION CARE

MONDAY 14 APRIL – FRIDAY 25 APRIL

**St Patrick's Primary School**

Wentworth St, Wallsend

7:00am – 6:00pm



*St Nicholas* OOSH

DIOCESE OF MAITLAND-NEWCASTLE



[stnicks.org.au](http://stnicks.org.au)

# WEEK ONE

**KEY** Price per day

**Day Camp**



**\$83**

**Incursions**



**\$98**

**Excursions**



**\$113**

## MONDAY 14 APRIL

### TALENT SHOW DAY

Share your special talents with your friends at our OOSHie Talent Show. Sit back and cheer on your friends.



## TUESDAY 15 APRIL

### OZ TAG WORKSHOP

Brush up on your OZ Tag skills and join in a friendly OZ Tag competition.



## WEDNESDAY 16 APRIL

### MUSEUM EXPLORATION

There is so much fun to be had at Newcastle Museum! Expect science, Newcastle history, sporting legends and so much more! A fun day out with your friends, in a space filled to the brim with history and learning.



## THURSDAY 17 APRIL

### DINOSAUR DAY

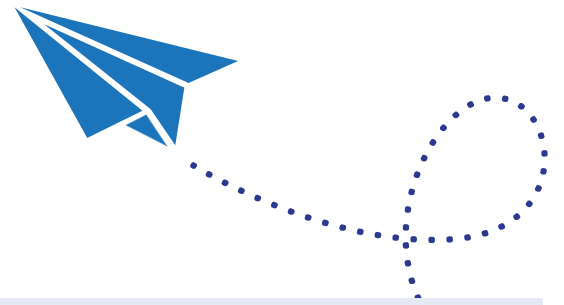
It's going to be a roaring good day as we explore the prehistorical world of dinosaurs through art, food and learning.



## FRIDAY 18 APRIL

PUBLIC HOLIDAY – VACATION CARE CLOSED

# WEEK TWO



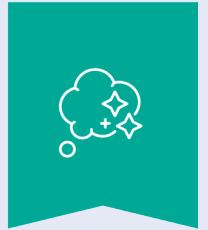
## MONDAY 21 APRIL

PUBLIC HOLIDAY – VACATION CARE CLOSED

## TUESDAY 22 APRIL

CREATION DAY

Be prepared for gloopy messes, exploring and creating and have an absolute ball with your friends while we get into some different creations.



## WEDNESDAY 23 APRIL

RHYTHMIC FUN

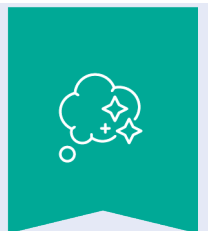
Explore movement and rhythm whilst you tap your foot to the beat with Cube Sports.



## THURSDAY 24 APRIL

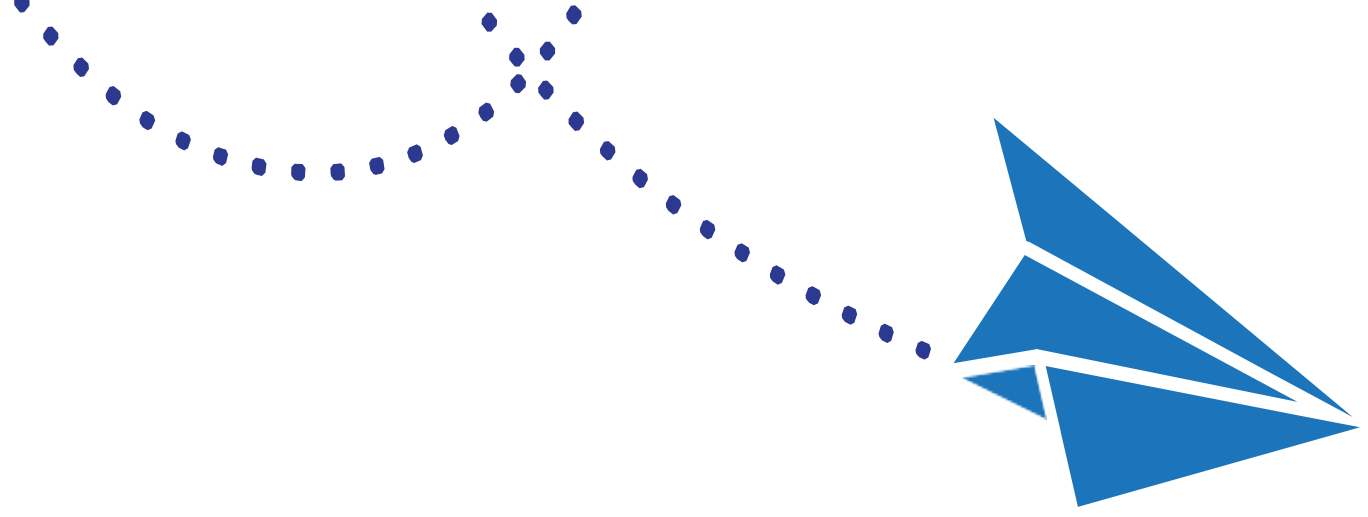
PJ MOVIE DAY

It's like a sleepover party but at OOSH. Rest up and relax in your pyjamas today while watching movies, playing party games, and enjoying delicious and nutritious food!



## FRIDAY 25 APRIL

PUBLIC HOLIDAY – VACATION CARE CLOSED



## IMPORTANT INFORMATION

### WHAT TO BRING

- ▶ **Wide-brimmed hat** – School hats are usually best. When the UV is 3 or above, children will be required to wear a hat. Sunscreen is provided and routinely applied as per our Sun Protection Policy. If your child is sensitive to standard broad-spectrum 30+ sunscreen, please provide appropriate sunscreen clearly labelled with your child's name.
- ▶ **Morning tea and lunch** – OOSH staff are not able to heat or cook food. Please ensure anything sent can be eaten straight from their lunch box. Our service is a nut-free zone. Breakfast and afternoon tea are provided.
- ▶ **Enclosed shoes** must be worn, such as joggers or sneakers.
- ▶ **Refillable water bottle.**
- ▶ **Spare set of clothes** in case of an accident or excessive mess.
- ▶ **Jumper or jacket**

### BOOKING CHECKLIST

No booking is accepted until all the following items have been completed and you have received emailed confirmation from your service's Nominated Supervisor:

- Complete our booking request through the Xplor Home app
- Confirm your enrolment details are up to date through Xplor (if you are not yet enrolled with St Nicholas OOSH, you will be sent a link)
- Any outstanding fees have been paid

### CHILD CARE SUBSIDY (CCS)

Did you know you are entitled to a discount of up to 90% off your fees through the Australian Government's Child Care Subsidy?

To ensure you receive your entitled subsidy, remember to confirm your CCS enrolment via the **Centrelink website** or app.

### CANCELLATIONS AND ABSENCE

To change your booking, simply reach out to the St Nicholas OOSH service you requested a booking for. Please note, our cancellation policy requires notice of five (5) business days for cancellation of Vacation Care bookings. If you cancel within 5 business days of your booking, you will be charged the full rate.

If your child is sick or otherwise unable to attend for one of your bookings, please let us know with as much notice as possible by phoning or texting the service's mobile number. Please note, you will still be liable for any fees incurred on this day. If children are unwell, please refrain from bringing them to care.

### ADDITIONAL INFORMATION

Risk assessments are completed for all excursions and are available onsite for viewing. An OOSH staff member can provide a copy of any risk assessments to parents/caregivers upon request.

*Please note, the suggested outcome may not map the pedagogical intent of the planned experience. This is a broad suggestion, but should not be held as the only possibility. The choice of an outcome relates directly to the learning and benefits we anticipate children will gain from the experience, however should you wish to alter this outcome due to your own curriculum understanding, we welcome this*