



AUTUMN VACATION CARE

MONDAY 14 APRIL – FRIDAY 25 APRIL

Holy Family Primary School

19 Janet St, Merewether

7:00am – 6:00pm



St Nicholas OOSH

DIOCESE OF MAITLAND-NEWCASTLE



stnicks.org.au

WEEK ONE

KEY Price per day

Day Camp



\$83

Incursions



\$98

Excursions



\$113

MONDAY 14 APRIL

GARDENING DAY

We're going to celebrate International Gardening Day by getting our hands dirty, getting creative, and have lots of fun with gardening activities! Pot your very own grass head to take home and care for.



TUESDAY 15 APRIL

STUFFLERS EASTER

Hop into the Easter spirit with our Stuffers workshop! You'll bring your very own plush friend to life – choose, stuff, and cuddle up with an adorable Easter bunny pal.



WEDNESDAY 16 APRIL

EASTER EGGSTRAVAGANZA

Dive into Easter by making baskets, paper bunny craft and join in the egg hunt. For afternoon tea we will be enjoying some hot cross bun treats.



THURSDAY 17 APRIL

ALICE IN WONDERLAND

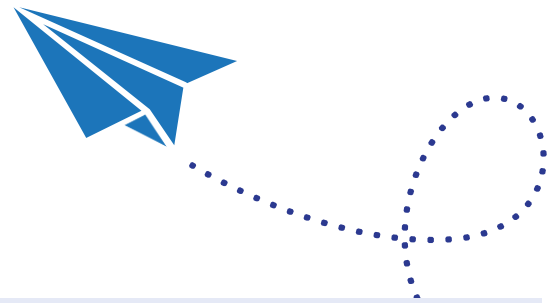
Fall down the rabbit hole with Alice as she navigates the magical world of Wonderland on a journey where everything seems to be upside down! Join us as we visit the Young People's Theatre to see a performance of a classic book come to life.



FRIDAY 18 APRIL

PUBLIC HOLIDAY – VACATION CARE CLOSED

WEEK TWO



MONDAY 21 APRIL

PUBLIC HOLIDAY – VACATION CARE CLOSED

TUESDAY 22 APRIL

BLACKBUTT RESERVE

Enjoy the sunshine and scenery of Blackbutt Reserve. Play on the playground, enjoy a picnic lunch and visit the furry, feathery and scaly creatures of the reserve.



WEDNESDAY 23 APRIL

AROUND THE WORLD

Get ready for a whirlwind trip across the globe – no passport required! A day spent exploring the different cultures, traditions and flavours from around the world. Don't miss out on this global adventure.



THURSDAY 24 APRIL

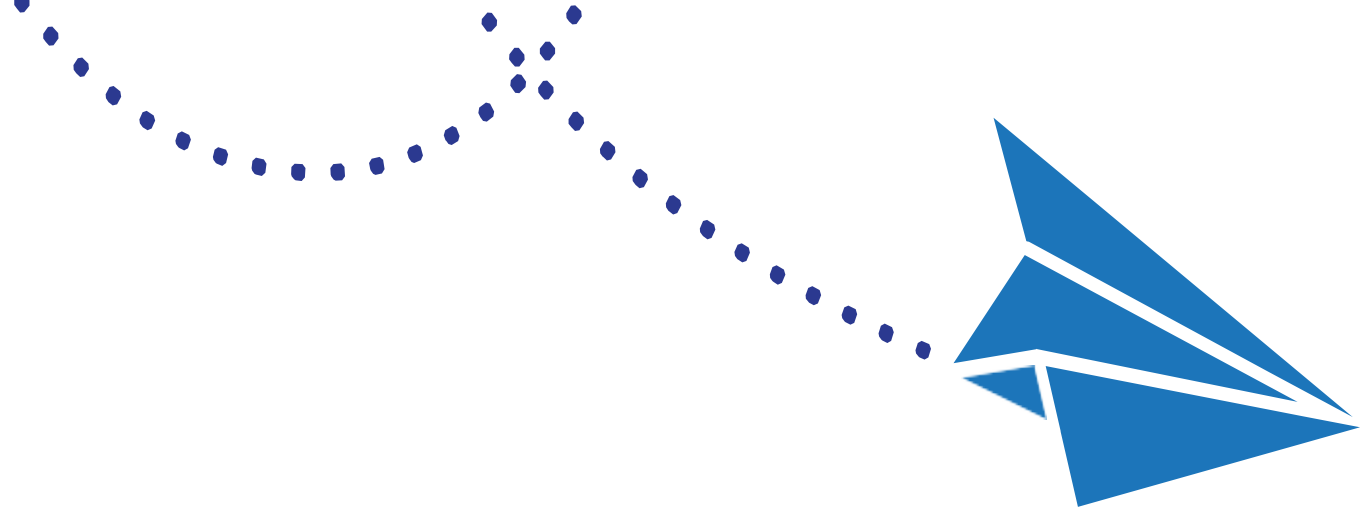
BRICKS 4 KIDZ

Let your imagination run wild as you build motorised models and creations out of Lego with Bricks 4 Kidz Building Workshop.



FRIDAY 25 APRIL

PUBLIC HOLIDAY – VACATION CARE CLOSED



IMPORTANT INFORMATION

WHAT TO BRING

- ▶ **Wide-brimmed hat** – School hats are usually best. When the UV is 3 or above, children will be required to wear a hat. Sunscreen is provided and routinely applied as per our Sun Protection Policy. If your child is sensitive to standard broad-spectrum 30+ sunscreen, please provide appropriate sunscreen clearly labelled with your child's name.
- ▶ **Morning tea and lunch** – OOSH staff are not able to heat or cook food. Please ensure anything sent can be eaten straight from their lunch box. Our service is a nut-free zone. Breakfast and afternoon tea are provided.
- ▶ **Enclosed shoes** must be worn, such as joggers or sneakers.
- ▶ **Refillable water bottle.**
- ▶ **Spare set of clothes** in case of an accident or excessive mess.
- ▶ **Jumper or jacket**

BOOKING CHECKLIST

No booking is accepted until all the following items have been completed and you have received emailed confirmation from your service's Nominated Supervisor:

- ☐ Complete our booking request through the Xplor Home app
- ☐ Confirm your enrolment details are up to date through Xplor (if you are not yet enrolled with St Nicholas OOSH, you will be sent a link)
- ☐ Any outstanding fees have been paid

CHILD CARE SUBSIDY (CCS)

Did you know you are entitled to a discount of up to 90% off your fees through the Australian Government's Child Care Subsidy?

To ensure you receive your entitled subsidy, remember to confirm your CCS enrolment via the **Centrelink website** or app.

CANCELLATIONS AND ABSENCE

To change your booking, simply reach out to the St Nicholas OOSH service you requested a booking for.

Please note, our cancellation policy requires notice of five (5) business days for cancellation of Vacation Care bookings. If you cancel within 5 business days of your booking, you will be charged the full rate.

If your child is sick or otherwise unable to attend for one of your bookings, please let us know with as much notice as possible by phoning or texting the service's mobile number. Please note, you will still be liable for any fees incurred on this day. If children are unwell, please refrain from bringing them to care.

ADDITIONAL INFORMATION

Risk assessments are completed for all excursions and are available onsite for viewing. An OOSH staff member can provide a copy of any risk assessments to parents/ caregivers upon request.

Please note, the suggested outcome may not map the pedagogical intent of the planned experience. This is a broad suggestion, but should not be held as the only possibility. The choice of an outcome relates directly to the learning and benefits we anticipate children will gain from the experience, however should you wish to alter this outcome due to your own curriculum understanding, we welcome this