



# AUTUMN VACATION CARE

MONDAY 14 APRIL – FRIDAY 25 APRIL

**St Patrick's Primary School**

Gregorys Rd, Lochinvar

7:00am – 6:00pm



*St Nicholas* OOSH

DIOCESE OF MAITLAND-NEWCASTLE



[stnicks.org.au](http://stnicks.org.au)

# WEEK ONE

**KEY** Price per day

**Day Camp**



\$83

**Incursions**



\$98

**Excursions**



\$113

## MONDAY 14 APRIL

### PJ MOVIE DAY

It's like a sleepover party but at OOSH. Rest up and relax in your pyjamas today while watching movies, playing party games, and enjoying delicious and nutritious food!



## TUESDAY 15 APRIL

### HUNTER VALLEY PUTT PUTT

Tee up for an epic day on the green with aqua gold at Hunter Valley Gardens. Can you make the shot and complete the course?



## WEDNESDAY 16 APRIL

### SENSORY DAY

Dive into the world of textures, smells, sounds, tastes and sights with an epic sensory day packed with experiences to encourage learning through play.



## THURSDAY 17 APRIL

### BUILD A BEAR - EASTER EDITION

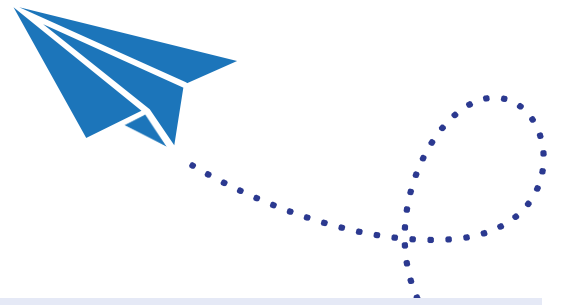
Pick your favorite cuddly bear from the Easter-themed collection and start bringing your new buddy to life!



## FRIDAY 18 APRIL

### PUBLIC HOLIDAY – VACATION CARE CLOSED

# WEEK TWO



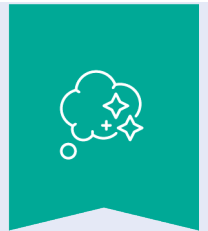
## MONDAY 21 APRIL

PUBLIC HOLIDAY – VACATION CARE CLOSED

## TUESDAY 22 APRIL

OUTDOOR SPORTS DAY

Unleash your inner athlete and have a blast with your friends as you play sport and complete an obstacle course.



## WEDNESDAY 23 APRIL

COLOUR RUN

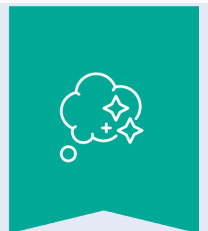
Returning for another vacation season, prepare to tackle the colour run. Prepare your best obstacle outfit to wear, featuring colour, funky hair and face painting. Pair this with a paint and sip where you will explore colour, creating a piece to take home.



## THURSDAY 24 APRIL

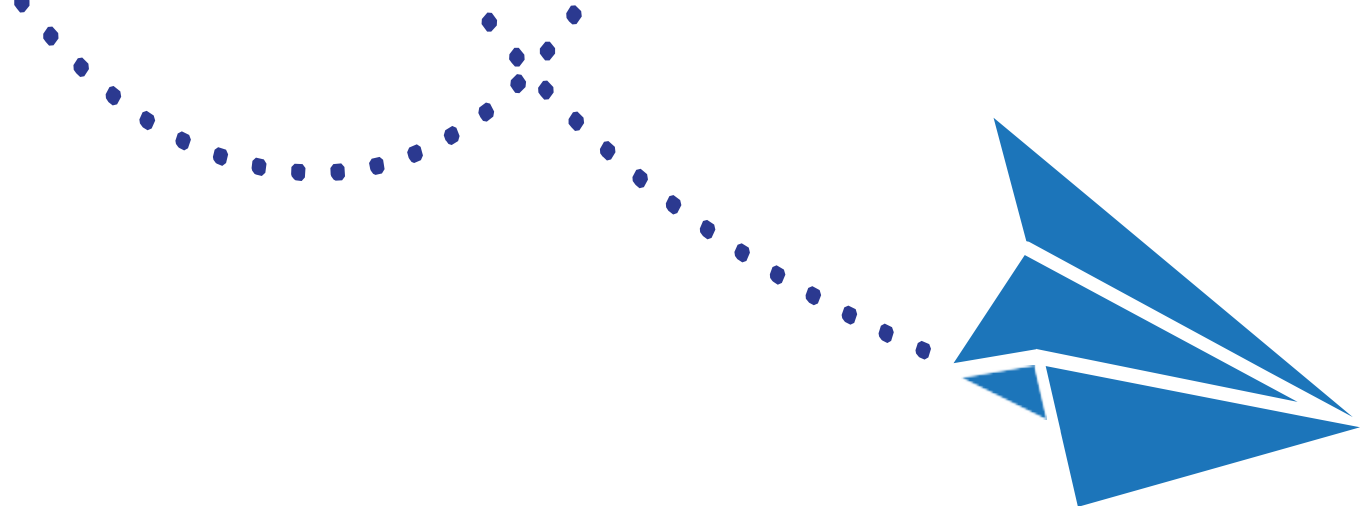
PARTY DAY

Celebrate the last day of Vacation Care with an epic party featuring your favourite songs and an exciting mix of classic party games.



## FRIDAY 25 APRIL

PUBLIC HOLIDAY – VACATION CARE CLOSED



## IMPORTANT INFORMATION

### WHAT TO BRING

- ▶ **Wide-brimmed hat** – School hats are usually best. When the UV is 3 or above, children will be required to wear a hat. Sunscreen is provided and routinely applied as per our Sun Protection Policy. If your child is sensitive to standard broad-spectrum 30+ sunscreen, please provide appropriate sunscreen clearly labelled with your child's name.
- ▶ **Morning tea and lunch** – OOSH staff are not able to heat or cook food. Please ensure anything sent can be eaten straight from their lunch box. Our service is a nut-free zone. Breakfast and afternoon tea are provided.
- ▶ **Enclosed shoes** must be worn, such as joggers or sneakers.
- ▶ **Refillable water bottle.**
- ▶ **Spare set of clothes** in case of an accident or excessive mess.
- ▶ **Jumper or jacket**

### BOOKING CHECKLIST

No booking is accepted until all the following items have been completed and you have received emailed confirmation from your service's Nominated Supervisor:

- Complete our booking request through the Xplor Home app
- Confirm your enrolment details are up to date through Xplor (if you are not yet enrolled with St Nicholas OOSH, you will be sent a link)
- Any outstanding fees have been paid

### CHILD CARE SUBSIDY (CCS)

Did you know you are entitled to a discount of up to 90% off your fees through the Australian Government's Child Care Subsidy?

To ensure you receive your entitled subsidy, remember to confirm your CCS enrolment via the **Centrelink website** or app.

### CANCELLATIONS AND ABSENCE

To change your booking, simply reach out to the St Nicholas OOSH service you requested a booking for.

Please note, our cancellation policy requires notice of five (5) business days for cancellation of Vacation Care bookings. If you cancel within 5 business days of your booking, you will be charged the full rate.

If your child is sick or otherwise unable to attend for one of your bookings, please let us know with as much notice as possible by phoning or texting the service's mobile number. Please note, you will still be liable for any fees incurred on this day. If children are unwell, please refrain from bringing them to care.

### ADDITIONAL INFORMATION

Risk assessments are completed for all excursions and are available onsite for viewing. An OOSH staff member can provide a copy of any risk assessments to parents/caregivers upon request.

*Please note, the suggested outcome may not map the pedagogical intent of the planned experience. This is a broad suggestion, but should not be held as the only possibility. The choice of an outcome relates directly to the learning and benefits we anticipate children will gain from the experience, however should you wish to alter this outcome due to your own curriculum understanding, we welcome this*