



AUTUMN VACATION CARE

MONDAY 14 APRIL – FRIDAY 25 APRIL

30 Oakland St, Glendale

7:00am – 5:00pm



St Nicholas OOSH

DIOCESE OF MAITLAND-NEWCASTLE



stnicks.org.au

WEEK ONE

KEY Price per day

Day Camp



\$83

Incursions



\$98

Excursions



\$113

MONDAY 14 APRIL

FOODIE FEAST

Brush up on your cooking skills with a unique opportunity to learn from the team at Grill'd Charlestown. Back at OOSH you will enjoy some delicious food and practice your newly learnt skills as you prepare afternoon tea.



TUESDAY 15 APRIL

KARATE CHOP

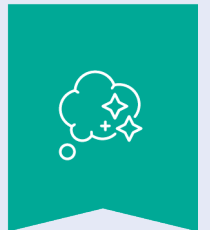
Become a martial arts master with this blend of martial arts training across Okinawan Karate, Jio Jitsu, boxing and wrestling workshop.



WEDNESDAY 16 APRIL

BEADING BONANZA

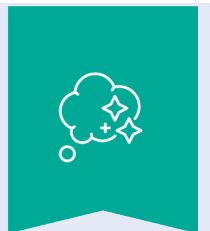
Take your beading skills to the next level and create your own keyrings, and hama bed designs featuring your favourite characters.



THURSDAY 17 APRIL

EASTER EXTRAVAGANZA

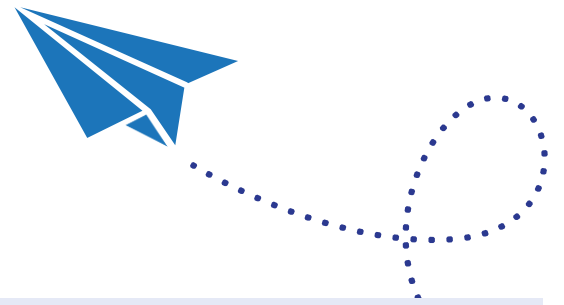
Hop into fun at our Easter Eggstravaganza Day! Join us for a day filled with exciting egg hunts, games, crafts, and more!



FRIDAY 18 APRIL

PUBLIC HOLIDAY – VACATION CARE CLOSED

WEEK TWO



MONDAY 21 APRIL

PUBLIC HOLIDAY – VACATION CARE CLOSED

TUESDAY 22 APRIL

ITS SHOWTIME

Let's go to the Civic playhouse with our friends from Edgeworth OOSH to watch the musical 'Dot and the Kangaroo'. This is a story about 'Dot' who explores the Australian bush and meets quirky Aussie native characters. They will embark on an adventure together to find their way home.



WEDNESDAY 23 APRIL

DANCE GAMES

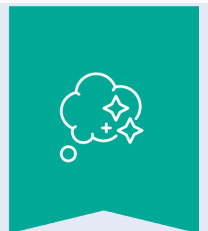
Let loose and tap your feet to the beat with this moving and grooving dance workshop thanks to Cube Sports.



THURSDAY 24 APRIL

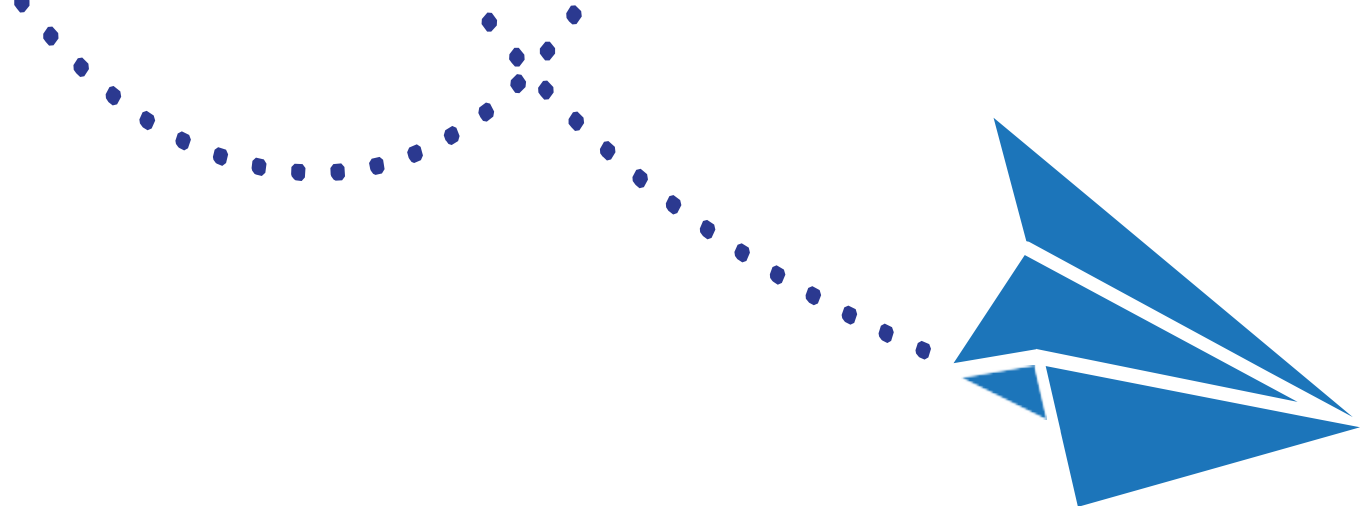
PIZZA, POPCORN AND MOVIES

Enter the ultimate relaxation zone to finish up the school holidays. Work with your ooshie friends to create the OOSH Cinema experience of your dreams. Choose your pizza for lunch, grab your popcorn and sit back and relax to your favourite films.



FRIDAY 25 APRIL

PUBLIC HOLIDAY – VACATION CARE CLOSED



IMPORTANT INFORMATION

WHAT TO BRING

- ▶ **Wide-brimmed hat** – School hats are usually best. When the UV is 3 or above, children will be required to wear a hat. Sunscreen is provided and routinely applied as per our Sun Protection Policy. If your child is sensitive to standard broad-spectrum 30+ sunscreen, please provide appropriate sunscreen clearly labelled with your child's name.
- ▶ **Morning tea and lunch** – OOSH staff are not able to heat or cook food. Please ensure anything sent can be eaten straight from their lunch box. Our service is a nut-free zone. Breakfast and afternoon tea are provided.
- ▶ **Enclosed shoes** must be worn, such as joggers or sneakers.
- ▶ **Refillable water bottle.**
- ▶ **Spare set of clothes** in case of an accident or excessive mess.
- ▶ **Jumper or jacket**

BOOKING CHECKLIST

No booking is accepted until all the following items have been completed and you have received emailed confirmation from your service's Nominated Supervisor:

- Complete our booking request through the Xplor Home app
- Confirm your enrolment details are up to date through Xplor (if you are not yet enrolled with St Nicholas OOSH, you will be sent a link)
- Any outstanding fees have been paid

CHILD CARE SUBSIDY (CCS)

Did you know you are entitled to a discount of up to 90% off your fees through the Australian Government's Child Care Subsidy?

To ensure you receive your entitled subsidy, remember to confirm your CCS enrolment via the **Centrelink website** or app.

CANCELLATIONS AND ABSENCE

To change your booking, simply reach out to the St Nicholas OOSH service you requested a booking for.

Please note, our cancellation policy requires notice of five (5) business days for cancellation of Vacation Care bookings. If you cancel within 5 business days of your booking, you will be charged the full rate.

If your child is sick or otherwise unable to attend for one of your bookings, please let us know with as much notice as possible by phoning or texting the service's mobile number. Please note, you will still be liable for any fees incurred on this day. If children are unwell, please refrain from bringing them to care.

ADDITIONAL INFORMATION

Risk assessments are completed for all excursions and are available onsite for viewing. An OOSH staff member can provide a copy of any risk assessments to parents/caregivers upon request.

Please note, the suggested outcome may not map the pedagogical intent of the planned experience. This is a broad suggestion, but should not be held as the only possibility. The choice of an outcome relates directly to the learning and benefits we anticipate children will gain from the experience, however should you wish to alter this outcome due to your own curriculum understanding, we welcome this