



AUTUMN VACATION CARE

MONDAY 14 APRIL – FRIDAY 25 APRIL

Therry Centre

57 King St, East Maitland

6:30am – 6:00pm



St Nicholas OOSH

DIOCESE OF MAITLAND-NEWCASTLE



stnicks.org.au

WEEK ONE

KEY Price per day

Day Camp



\$83

Incursions



\$98

Excursions



\$113

MONDAY 14 APRIL

CANVAS ART DAY

With canvas as your medium, design and decorate your own bag and art piece using paint and tie-dye techniques.



TUESDAY 15 APRIL

FOOTBALL FANATICS

Join us for an action-packed sports day with Cube Sports. Wear your favourite jersey, learn football techniques, compete in mini tournaments, and try out different sports, all while having a blast.



WEDNESDAY 16 APRIL

TV GAME SHOW DAY

Ever wanted to step into the arena of your favourite TV game shows? This is your opportunity as we play Deal or No Deal, Cakeboss with playdough and more.



THURSDAY 17 APRIL

HUNTER VALLEY GARDENS

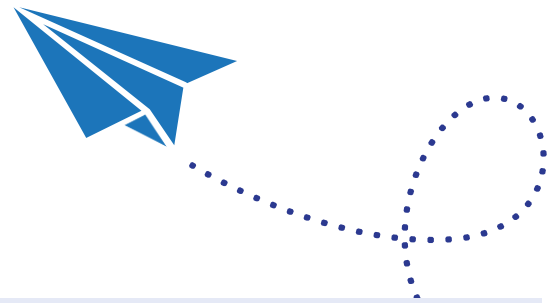
Journey to the spectacular Hunter Valley Gardens to see the Mega Creatures, complete a scavenger hunt and feed the magnificent koi fish.



FRIDAY 18 APRIL

PUBLIC HOLIDAY – VACATION CARE CLOSED

WEEK TWO



MONDAY 21 APRIL

PUBLIC HOLIDAY – VACATION CARE CLOSED

TUESDAY 22 APRIL

SWEET VALLEY BABY ANIMALS

Venture into farmland fun with Sweet Valley Baby Animals with their petting zoo featuring piglets, ducklings, goats and guinea pigs. This will inspire an afternoon of crafting with painting, textiles and paper craft.



WEDNESDAY 23 APRIL

MINECRAFTS ADVENTURES

Follow the blocks of the Minecraft adventures at Reading Cinema Maitland. Join your friends and grab your popcorn for a thrilling adventure!

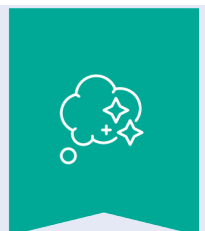


THURSDAY 24 APRIL

BYO DEVICE DAY

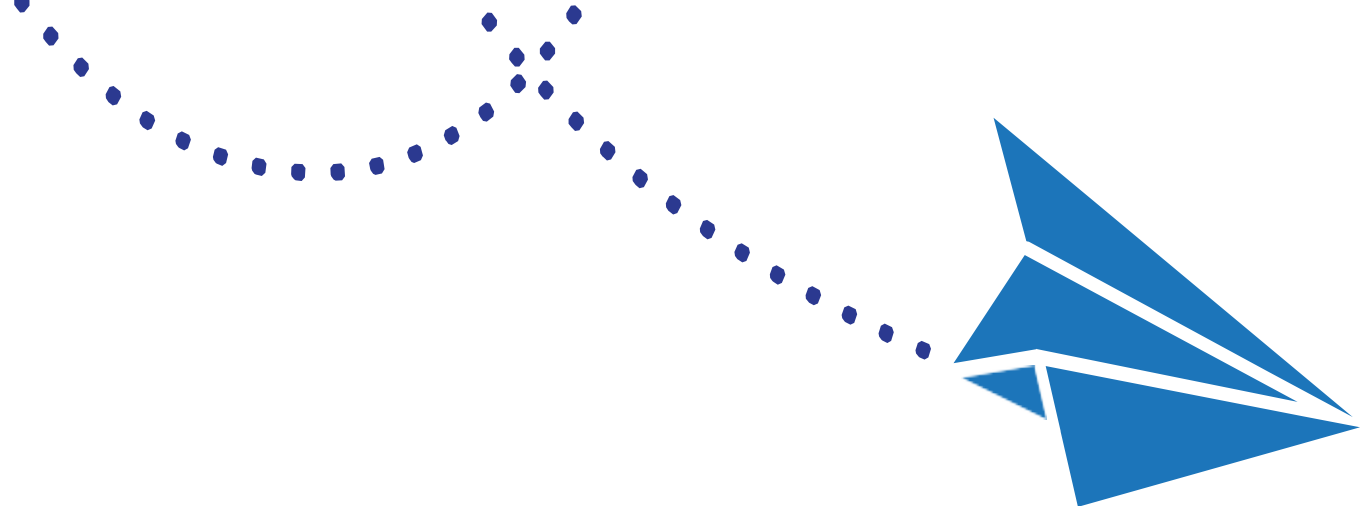
It is DIY Day as you create your own pizzas for lunch, create movie skits with your friends to perform and partake in games.

**Please bring your own device to play games on, including a laptop, ipad or Switch*



FRIDAY 25 APRIL

PUBLIC HOLIDAY – VACATION CARE CLOSED



IMPORTANT INFORMATION

WHAT TO BRING

- ▶ **Wide-brimmed hat** – School hats are usually best. When the UV is 3 or above, children will be required to wear a hat. Sunscreen is provided and routinely applied as per our Sun Protection Policy. If your child is sensitive to standard broad-spectrum 30+ sunscreen, please provide appropriate sunscreen clearly labelled with your child's name.
- ▶ **Morning tea and lunch** – OOSH staff are not able to heat or cook food. Please ensure anything sent can be eaten straight from their lunch box. Our service is a nut-free zone. Breakfast and afternoon tea are provided.
- ▶ **Enclosed shoes** must be worn, such as joggers or sneakers.
- ▶ **Refillable water bottle.**
- ▶ **Spare set of clothes** in case of an accident or excessive mess.
- ▶ **Jumper or jacket**

BOOKING CHECKLIST

No booking is accepted until all the following items have been completed and you have received emailed confirmation from your service's Nominated Supervisor:

- Complete our booking request through the Xplor Home app
- Confirm your enrolment details are up to date through Xplor (if you are not yet enrolled with St Nicholas OOSH, you will be sent a link)
- Any outstanding fees have been paid

CHILD CARE SUBSIDY (CCS)

Did you know you are entitled to a discount of up to 90% off your fees through the Australian Government's Child Care Subsidy?

To ensure you receive your entitled subsidy, remember to confirm your CCS enrolment via the **Centrelink website** or app.

CANCELLATIONS AND ABSENCE

To change your booking, simply reach out to the St Nicholas OOSH service you requested a booking for.

Please note, our cancellation policy requires notice of five (5) business days for cancellation of Vacation Care bookings. If you cancel within 5 business days of your booking, you will be charged the full rate.

If your child is sick or otherwise unable to attend for one of your bookings, please let us know with as much notice as possible by phoning or texting the service's mobile number. Please note, you will still be liable for any fees incurred on this day. If children are unwell, please refrain from bringing them to care.

ADDITIONAL INFORMATION

Risk assessments are completed for all excursions and are available onsite for viewing. An OOSH staff member can provide a copy of any risk assessments to parents/caregivers upon request.

Please note, the suggested outcome may not map the pedagogical intent of the planned experience. This is a broad suggestion, but should not be held as the only possibility. The choice of an outcome relates directly to the learning and benefits we anticipate children will gain from the experience, however should you wish to alter this outcome due to your own curriculum understanding, we welcome this