

SUMMER VACATION CARE

29th January – 31st January, 2024

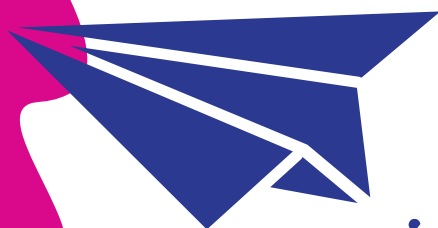
TAREE OOSH

St Joseph's Primary School

1 St Joseph's Dr, Taree

8:00am – 6:00pm

0427 655 471



St Nicholas OOSH

DIOCESE OF MAITLAND-NEWCASTLE



stnicholasoosh.org.au

WEEK FIVE

KEY Price per day

Day Camp



\$70

Incursions



\$80

Excursions



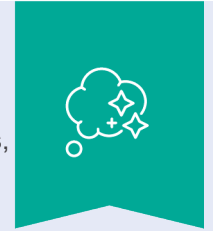
\$90

MONDAY 29TH JANUARY

WORLD PUZZLE DAY

If you didn't know, it's world puzzle day today! And to celebrate we will be doing everything puzzles, from jigsaws to riddles, mazes, and secret codes. Today is sure to give your brain a workout.

OUTCOME 4 - Children develop a range of thinking skills such as experimentation, hypothesising, researching, and investigating.



TUESDAY 30TH JANUARY

WOODWORKING

Today we will be building our own trinket boxes. You will be able to decorate in your own style and take home to show family and friends. We will also be creating other craft out of wood including photo frames, so come along and join in the fun.

OUTCOME 4 - Children and young people develop a range of learning and thinking skills and processes like problem solving, experimentation, researching and investigating.



WEDNESDAY 31ST JANUARY

KICK BACK AND CHILL OUT

It's the last day of the school holidays and it's time to get ready to get back into the classroom. Today we will be designing and decorating our own pencil case, keyrings and more to take home and use on your first day back.

OUTCOME 1 - Children develop their autonomy, resilience, and agency.

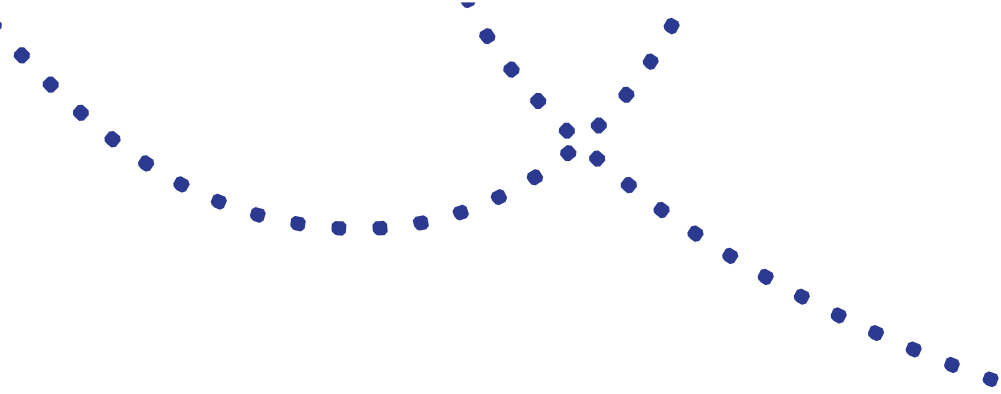


THURSDAY 1ST FEBRUARY – SCHOOL RETURNS

REGULAR BEFORE AND AFTER SCHOOL CARE RESUMES

FRIDAY 2ND FEBRUARY

REGULAR BEFORE AND AFTER SCHOOL CARE



IMPORTANT INFORMATION

[REQUEST A BOOKING](#)



WHAT TO BRING

- ▶ **Wide-brimmed hat** – School hats are usually best. When the UV is 3 or above, children will be required to wear a hat. Sunscreen is provided and routinely applied as per our Sun Protection Policy. If your child is sensitive to standard broad-spectrum 30+ sunscreen, please provide appropriate sunscreen clearly labelled with your child's name.
- ▶ **Morning tea and lunch** – OOSH staff are not able to heat or cook food. Please ensure anything sent can be eaten straight from their lunch box. Our service is a nut-free zone. Breakfast and afternoon tea are provided.
- ▶ **Enclosed shoes** must be worn, such as joggers or sneakers.
- ▶ **Refillable water bottle.**
- ▶ **Spare set of clothes** in case of an accident or excessive mess.
- ▶ **Jumper or jacket**

BOOKING CHECKLIST

No booking is accepted until all the following items have been completed and you have received emailed confirmation from your service's Nominated Supervisor:

- Complete our online booking request form, located at stnicholasoosh.org.au/vacation-care
- Confirm your enrolment details are up to date through Xplor (if you are not yet enrolled with St Nicholas OOSH, you will be sent a link)
- Any outstanding fees have been paid

CHILD CARE SUBSIDY (CCS)

Did you know you are entitled to a discount of up to 85% (90% from July 2023) off your fees through the Australian Government's Child Care Subsidy?

To ensure you receive your entitled subsidy, remember to confirm your CCS enrolment via the Centrelink website or app.

CANCELLATIONS AND ABSENCE

To change your booking, simply submit a new online booking form with your updated preferred days.

To cancel a booking, you can contact our Admin and Client Services team via email – vacationcare@stnicholasmn.org.au.

Please note, our cancellation policy requires notice of five (5) business days for cancellation of Vacation Care bookings. If you cancel within 5 business days of your booking, you will be charged the full rate.

If your child is sick or otherwise unable to attend for one of your bookings, please let us know with as much notice as possible by phoning or texting the service's mobile number. Please note, you will still be liable for any fees incurred on this day. If children are unwell, please refrain from bringing them to care.

ADDITIONAL INFORMATION

Risk assessments are completed for all excursions and are available onsite for viewing. An OOSH staff member can provide a copy of any risk assessments to parents/caregivers upon request.

Please note, the suggested outcome may not map the pedagogical intent of the planned experience. This is a broad suggestion, but should not be held as the only possibility. The choice of an outcome relates directly to the learning and benefits we anticipate children will gain from the experience, however should you wish to alter this outcome due to your own curriculum understanding, we welcome this